

CHENANGO FILING NO. 1

A PART OF THE N. 1/2 OF SECTIONS 32 & 33 T-5-S, R-66-W OF THE 6TH. P.M., COUNTY OF ARAPAHOE, STATE OF COLORADO.
SHEET 2 OF 3 SHEETS

Bridle paths - mowed 5x per year

Front entrances

maintained weekly - April to October
trash removal in off season

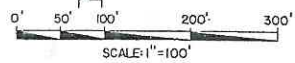
bridle path - impassible

no mowing done

Common area around arena

mowed a few more times than
bridle paths

Arena drug
as needed

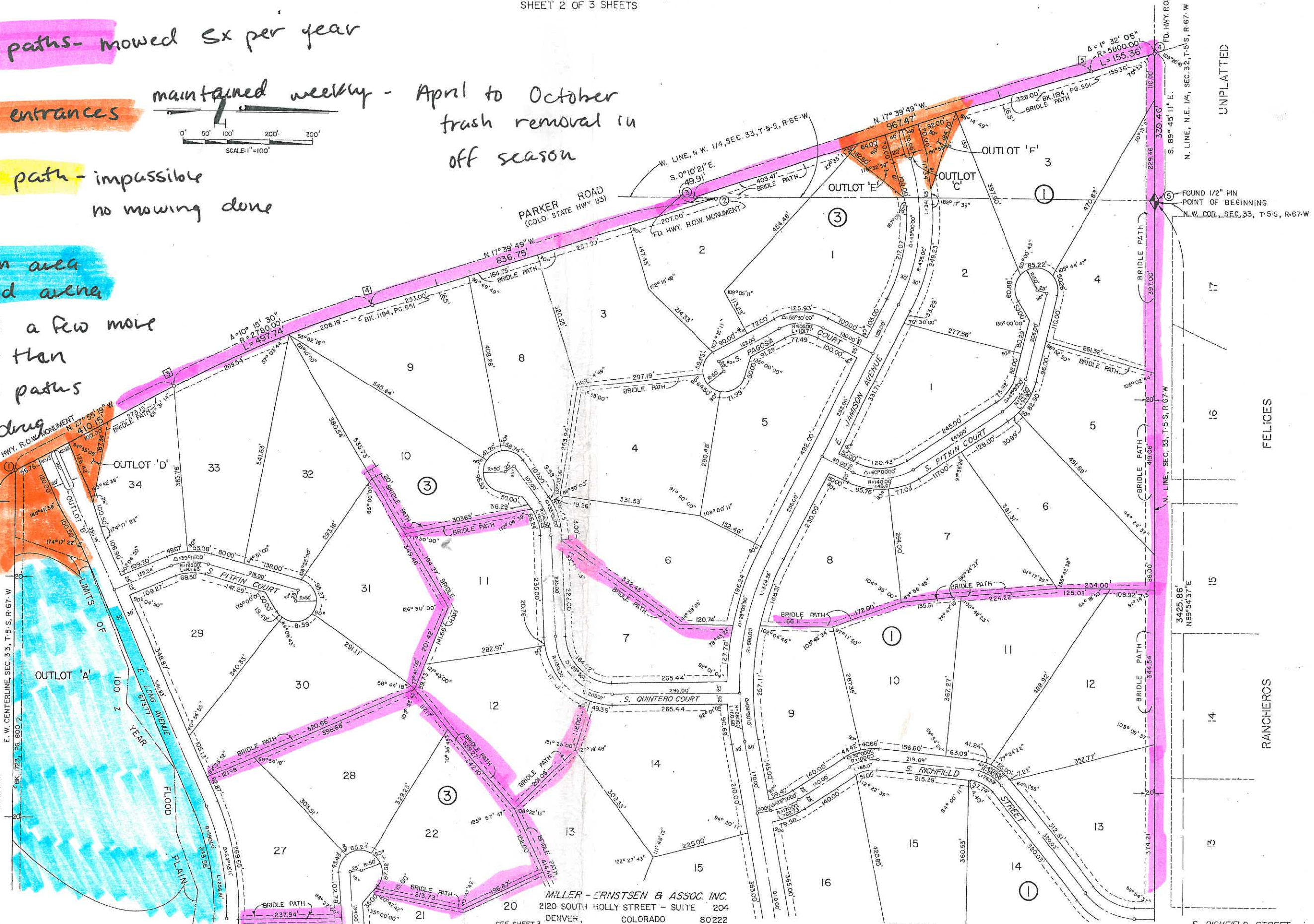


UNPLATTED

S 89° 56' 57" W
2756.29'

E. W. CENTERLINE, SEC. 33, T-5-S, R-67-W
BK. 1723, PG. 800 2

UNPLATTED



UNPLATTED

FELICES

RANCHEROS

MILLER - ERNSTSEN & ASSOC. INC.
2120 SOUTH HOLLY STREET - SUITE 204
DENVER, COLORADO 80222

SEE SHEET 3

SEE SHEET 3

S. RICHFIELD STREET

RATIFICATION RECORDED 11-2-79
AT BOOK 311 PAGE 467

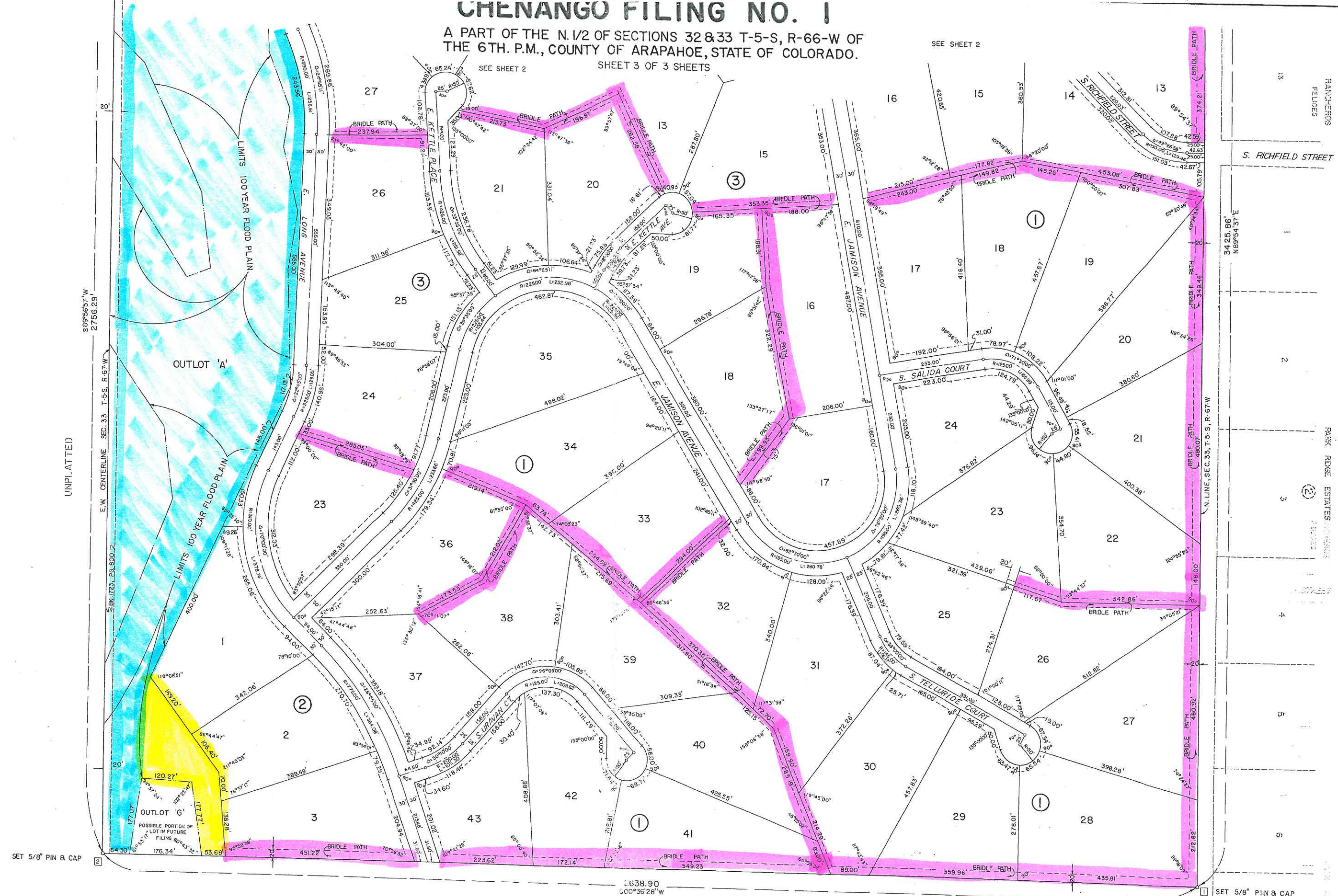
Chenango 1

32 15

CHENANGO FILING NO. 1

A PART OF THE N. 1/2 OF SECTIONS 32 & 33 T-5-S, R-66-W OF THE 6TH. P.M., COUNTY OF ARAPAHOE, STATE OF COLORADO.

SHEET 3 OF 3 SHEETS



SET 5/8" PIN & CAP

SET 5/8" PIN & CAP

MILLER-ERNSTSEN & ASSOC. INC.
2120 SOUTH HOLLY STREET - SUITE 204
DENVER, COLORADO 80222

REAFFIRMATION RECORDED 11-2-79
AT Boeck 3111 PAGE 467

Chenango 41

32 716

CHENANGO FILING NO. 2

A PART OF THE N 1/2 OF SECTIONS 33 & 34, T-5-S, R-6-W OF THE 6TH PM, COUNTY OF ARAPAHOE, STATE OF COLORADO.

SHEET 2 OF 3

BRIDLE PATH & 35' GAS EASEMENT (BOOK 1649, PAGE 31) FOUND 1/2" PIN [2] N.E. COR. SEC. 33

BRIDLE PATH & 35' GAS EASEMENT (BOOK 1649, PAGE 31) FOUND 1/2" PIN [5] W 1/4 COR. SEC. 34

SCALE: 1" = 100'

BRIDLE PATH & EASEMENT (BK. 1723 PG. 800) 1824.33'

S 89°56'57" W

BRIDLE PATH & EASEMENT (BK. 1723 PG. 800) 1824.33'

BRIDLE PATH & EASEMENT (BK. 1723 PG. 800) 1824.33'

BRIDLE PATH & EASEMENT (BK. 1723 PG. 800) 1824.33'

BRIDLE PATH & EASEMENT (BK. 1723 PG. 800) 1824.33'

BRIDLE PATH & EASEMENT (BK. 1723 PG. 800) 1824.33'

BRIDLE PATH & EASEMENT (BK. 1723 PG. 800) 1824.33'

BRIDLE PATH & EASEMENT (BK. 1723 PG. 800) 1824.33'

BRIDLE PATH & EASEMENT (BK. 1723 PG. 800) 1824.33'

BRIDLE PATH & EASEMENT (BK. 1723 PG. 800) 1824.33'

BRIDLE PATH & EASEMENT (BK. 1723 PG. 800) 1824.33'

BRIDLE PATH & EASEMENT (BK. 1723 PG. 800) 1824.33'

BRIDLE PATH & EASEMENT (BK. 1723 PG. 800) 1824.33'

BRIDLE PATH & EASEMENT (BK. 1723 PG. 800) 1824.33'

BRIDLE PATH & EASEMENT (BK. 1723 PG. 800) 1824.33'

BRIDLE PATH & EASEMENT (BK. 1723 PG. 800) 1824.33'

BRIDLE PATH & EASEMENT (BK. 1723 PG. 800) 1824.33'

BRIDLE PATH & EASEMENT (BK. 1723 PG. 800) 1824.33'

BRIDLE PATH & EASEMENT (BK. 1723 PG. 800) 1824.33'

BRIDLE PATH & EASEMENT (BK. 1723 PG. 800) 1824.33'

BRIDLE PATH & EASEMENT (BK. 1723 PG. 800) 1824.33'

BRIDLE PATH & EASEMENT (BK. 1723 PG. 800) 1824.33'

BRIDLE PATH & EASEMENT (BK. 1723 PG. 800) 1824.33'

BRIDLE PATH & EASEMENT (BK. 1723 PG. 800) 1824.33'

BRIDLE PATH & EASEMENT (BK. 1723 PG. 800) 1824.33'

BRIDLE PATH & EASEMENT (BK. 1723 PG. 800) 1824.33'

BRIDLE PATH & EASEMENT (BK. 1723 PG. 800) 1824.33'

BRIDLE PATH & EASEMENT (BK. 1723 PG. 800) 1824.33'

BRIDLE PATH & EASEMENT (BK. 1723 PG. 800) 1824.33'

BRIDLE PATH & EASEMENT (BK. 1723 PG. 800) 1824.33'

BRIDLE PATH & EASEMENT (BK. 1723 PG. 800) 1824.33'

BRIDLE PATH & EASEMENT (BK. 1723 PG. 800) 1824.33'

BRIDLE PATH & EASEMENT (BK. 1723 PG. 800) 1824.33'

BRIDLE PATH & EASEMENT (BK. 1723 PG. 800) 1824.33'

BRIDLE PATH & EASEMENT (BK. 1723 PG. 800) 1824.33'

BRIDLE PATH & EASEMENT (BK. 1723 PG. 800) 1824.33'

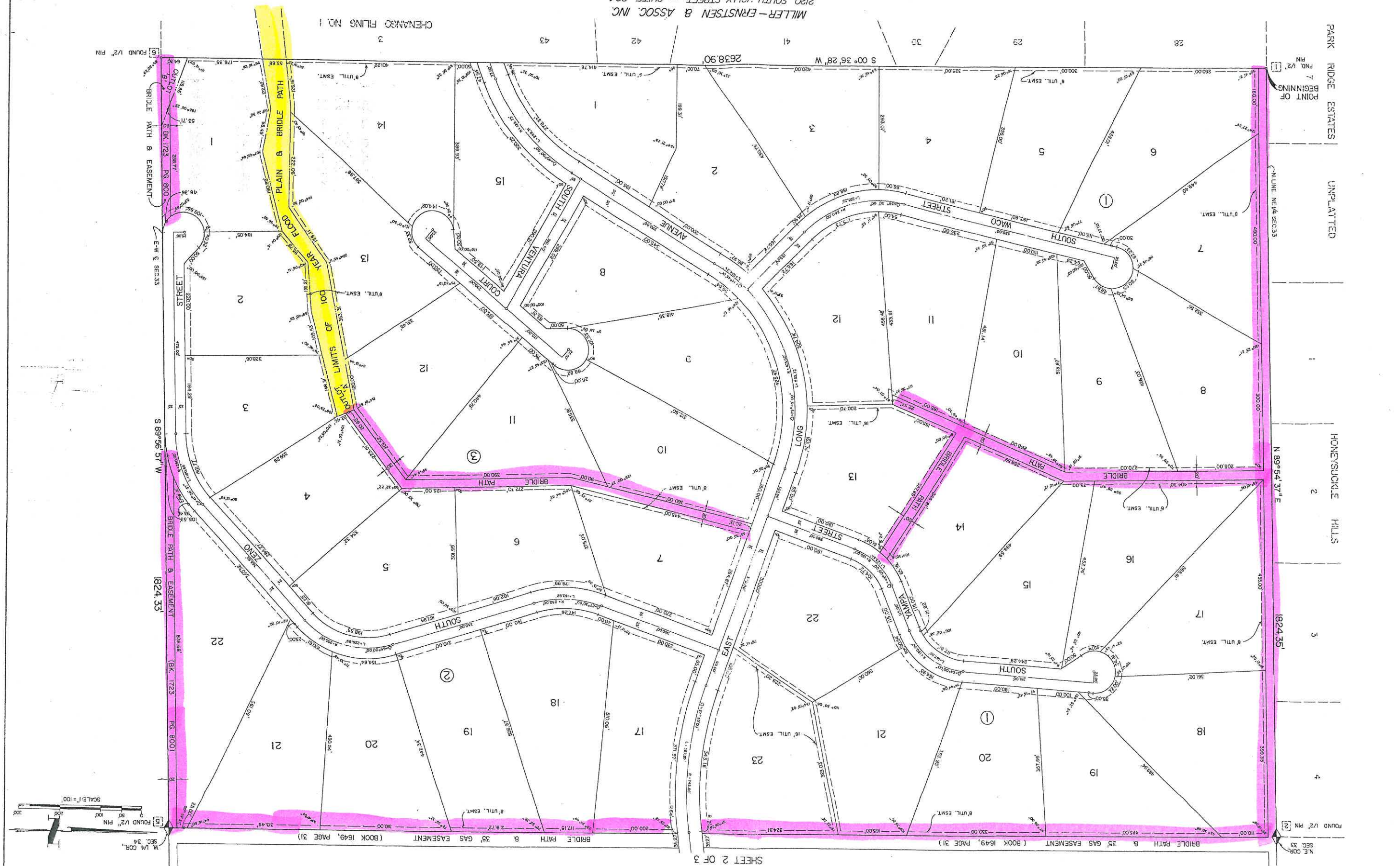
BRIDLE PATH & EASEMENT (BK. 1723 PG. 800) 1824.33'

BRIDLE PATH & EASEMENT (BK. 1723 PG. 800) 1824.33'

BRIDLE PATH & EASEMENT (BK. 1723 PG. 800) 1824.33'

BRIDLE PATH & EASEMENT (BK. 1723 PG. 800) 1824.33'

BRIDLE PATH & EASEMENT (BK. 1723 PG. 800) 1824.33'



MILLER-ERNSTSEN & ASSOC. INC.
2120 SOUTH HOLLY STREET - SUITE 204
DENVER, COLORADO 80222

CHENANGO FILING NO. 1

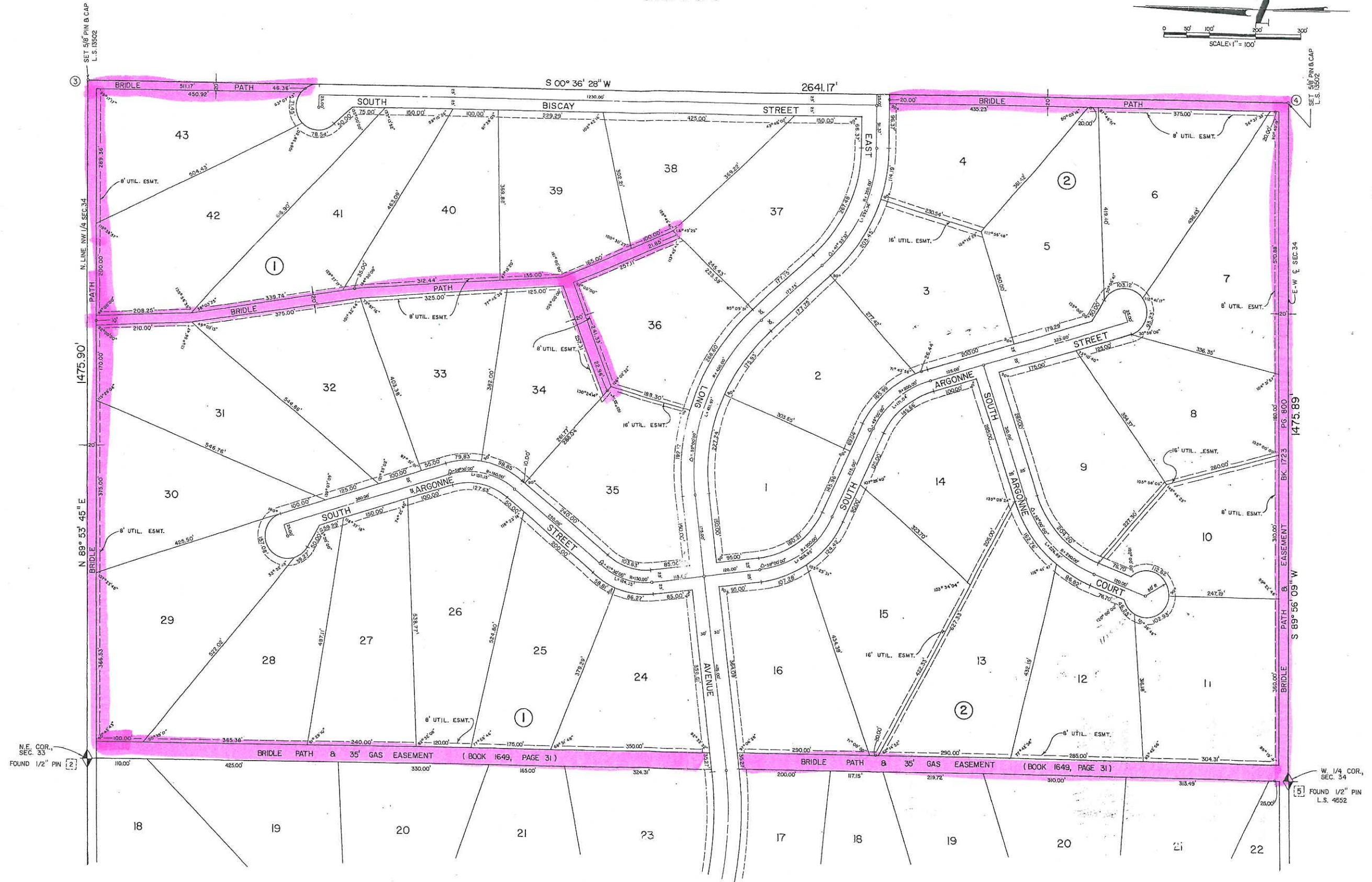
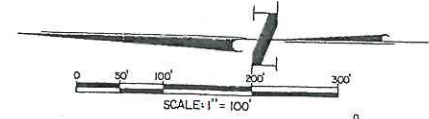
REVISIONS RECORDED 12-27-24
AT 3:14 P.M. PAGE 394

34-57

CHENANGO FILING NO. 2

A PART OF THE N. 1/2 OF SECTIONS 33 & 34, T-5-S, R-66-W OF THE
6TH. P.M., COUNTY OF ARAPAHOE, STATE OF COLORADO.

SHEET 3 OF 3



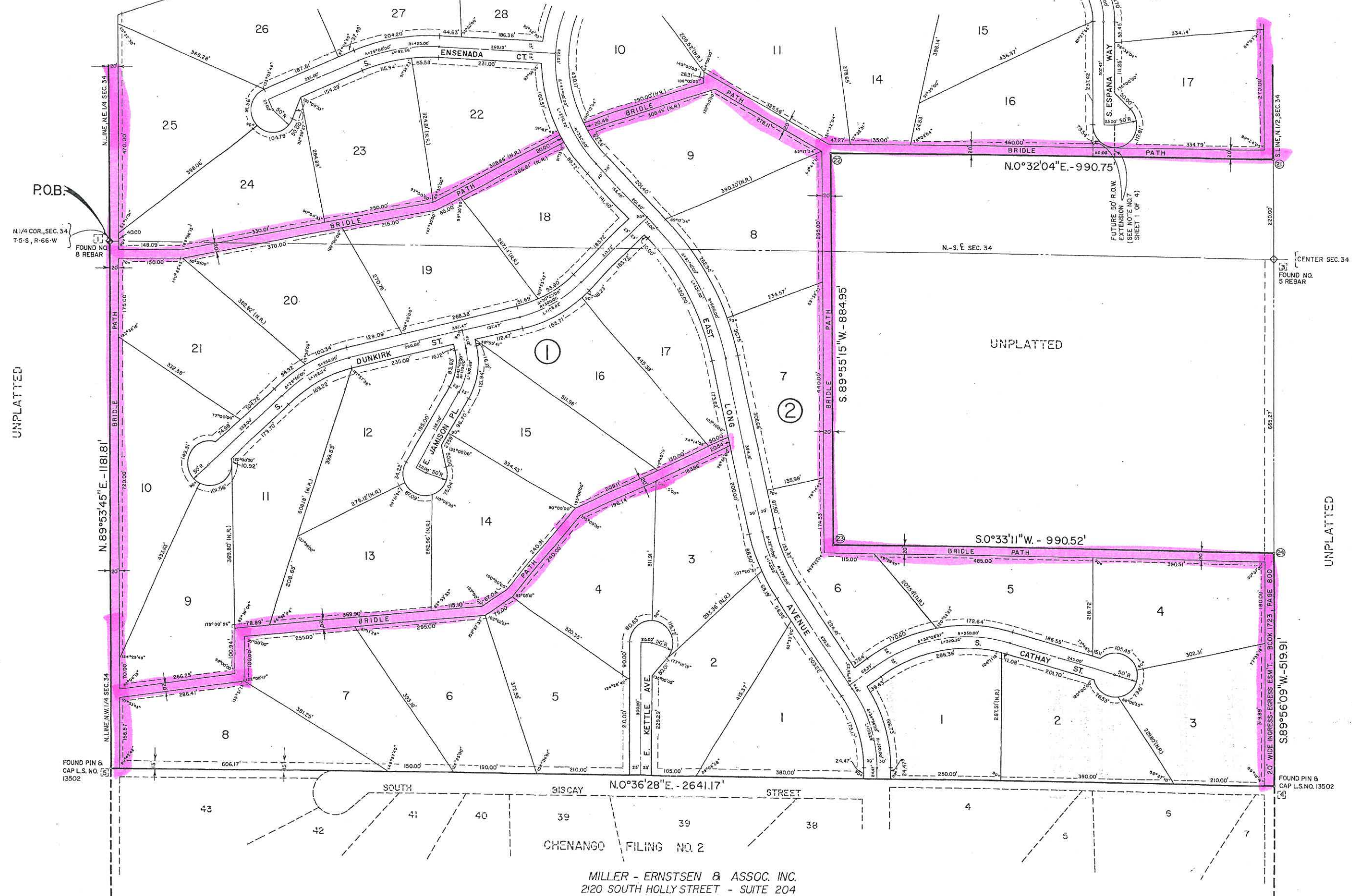
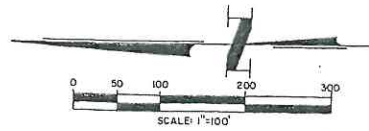
MILLER-ERNSTSEN & ASSOC. INC.
2120 SOUTH HOLLY STREET - SUITE 204
DENVER, COLORADO 80222

RATIFICATION RECORDED 12-27-79.
AT BOOK 3193, PAGE 390.

CHENANGO FILING NO. 3

A PART OF THE N. 1/2 OF SECTIONS 34 & 35, T-5-S, R-66-W OF THE
6TH P.M., COUNTY OF ARAPAHOE, STATE OF COLORADO.

SHEET 2 OF 4



CHENANGO FILING NO. 2

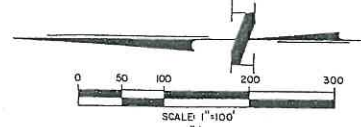
MILLER - ERNSTSEN & ASSOC. INC.
2120 SOUTH HOLLY STREET - SUITE 204
DENVER, COLORADO 80222

REVISION RECORD 11-9-77
AT BOOK 3115 PAGE 735

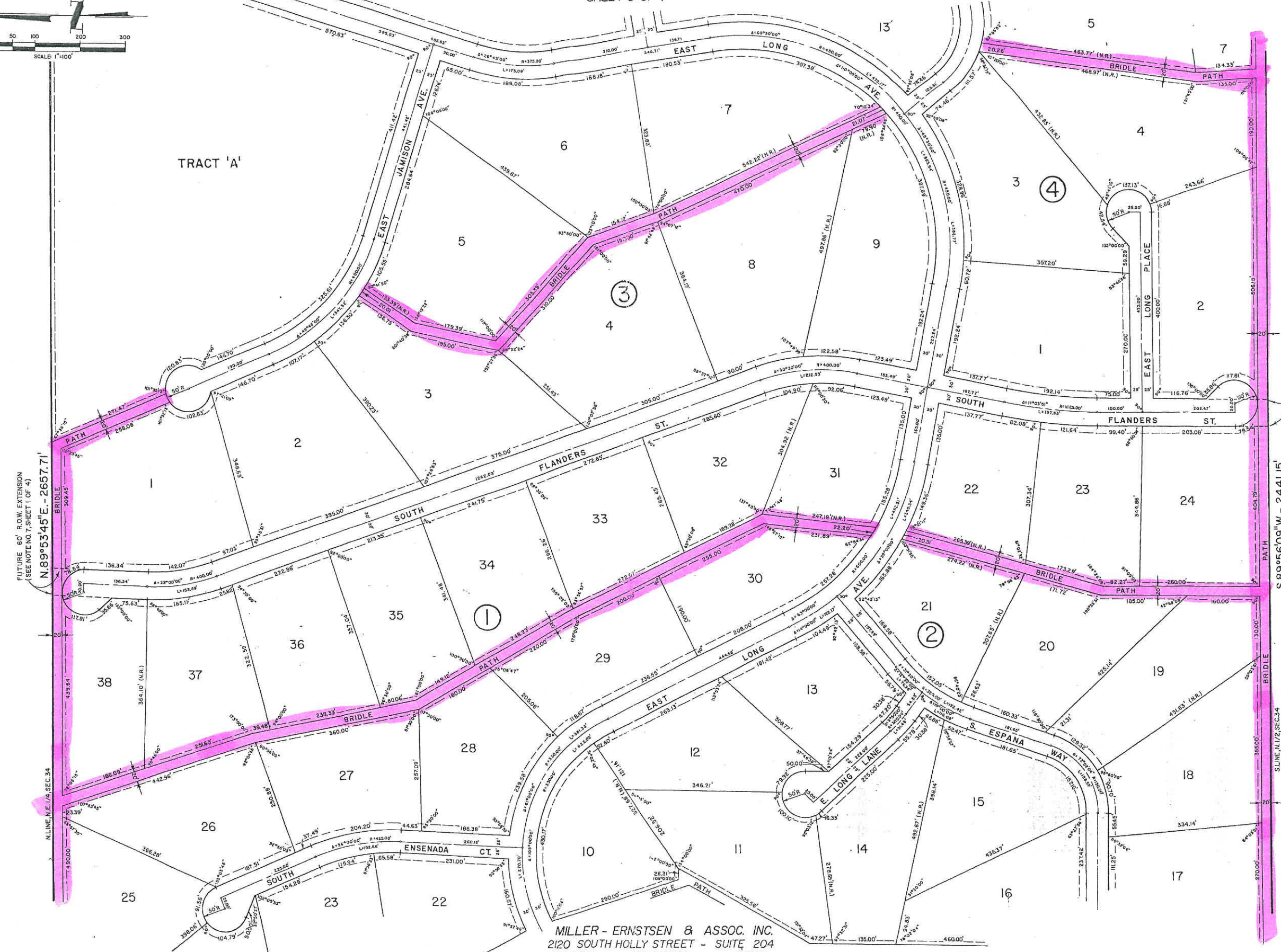
CHENANGO FILING NO. 3

A PART OF THE N. 1/2 OF SECTIONS 34 & 35, T-5-S, R-66-W OF THE
6TH P.M., COUNTY OF ARAPAHOE, STATE OF COLORADO.

SHEET 3 OF 4



UPLATTED



FUTURE 60' R.O.W. EXTENSION (SEE NOTE NO. 7, SHEET 1 OF 4)

UNPLATTED

MILLER - ERNSTSEN & ASSOC. INC.
2120 SOUTH HOLLY STREET - SUITE 204
DENVER, COLORADO 80222

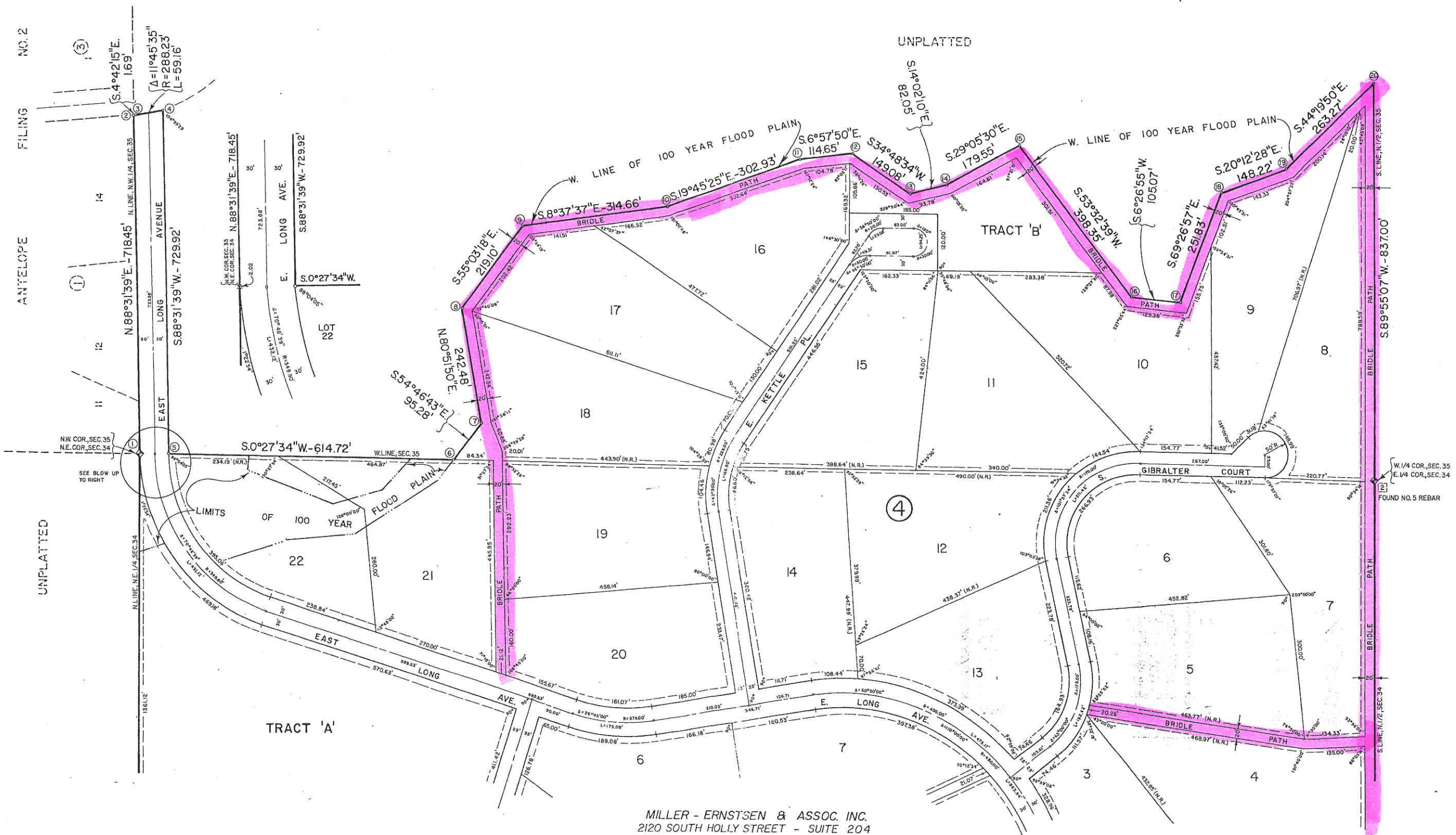
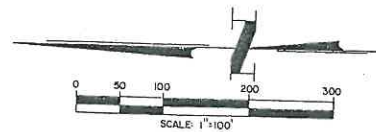
Revised Record 11-8-79
At Book 3115 Page 735

38-68

CHENANGO FILING NO. 3

A PART OF THE N. 1/2 OF SECTIONS 34 & 35, T-5-S, R-66-W OF THE 6TH P.M., COUNTY OF ARAPAHOE, STATE OF COLORADO.

SHEET 4 OF 4



MILLER - ERNSTSEN & ASSOC. INC.
2120 SOUTH HOLLY STREET - SUITE 204
DENVER, COLORADO 80222

RECORDATION REQUIRED 11-8-77
BY BOOK 3115 PAGE 735

32-69